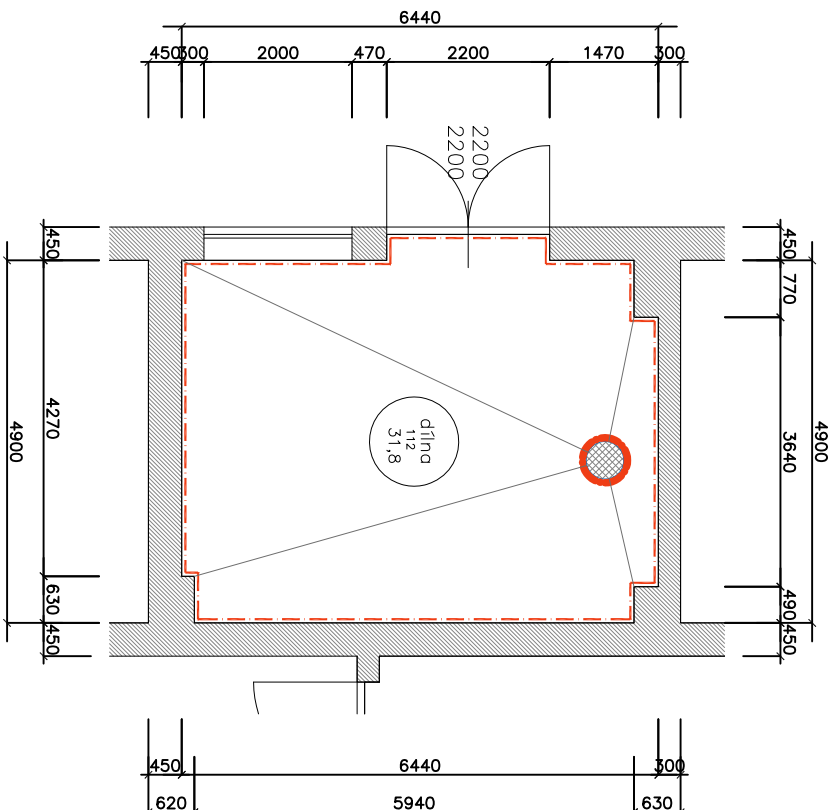
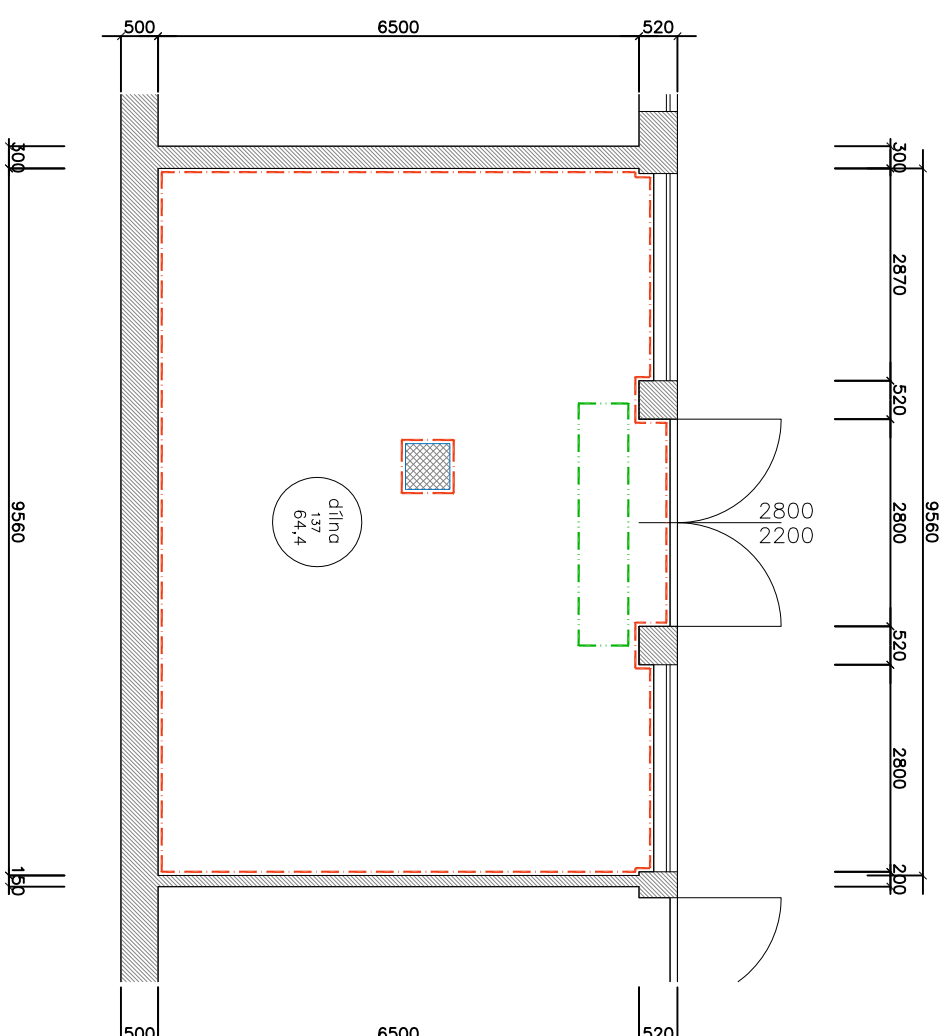


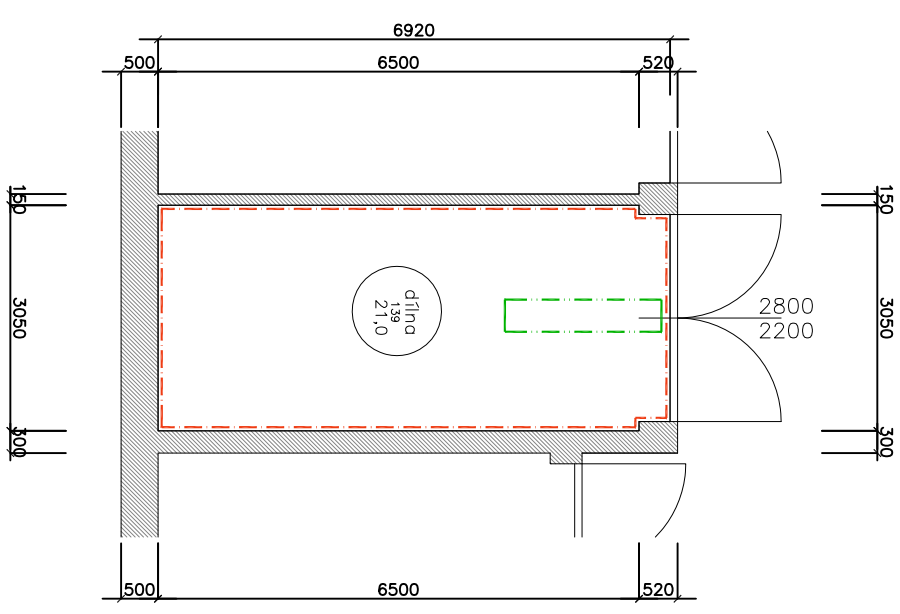
**PŮDORYS DÍLNÝ 112**



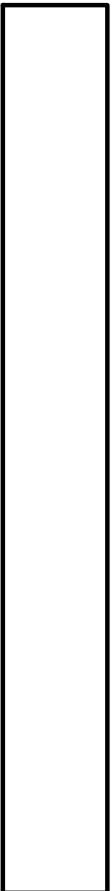
**PŮDORYS DÍLNÝ 137**



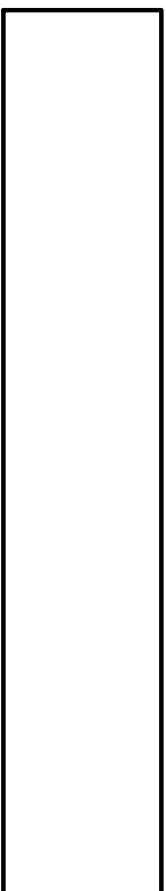
**PŮDORYS DÍLNÝ 139**



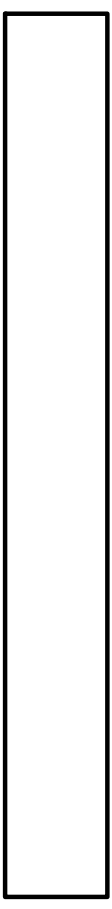
## VÝMĚRY DÍLNÝ 112



## VÝMĚRY DÍLNÝ 137




## VÝMĚRY DÍLNÝ 139



## LEGENDA

- 
- The diagram illustrates different types of floor construction layers and their corresponding structural elements. It is organized into two columns. The left column shows cross-sections of floor layers, and the right column shows the corresponding structural elements.
- Top Row:** A cross-section of a floor layer with a dashed line indicating a joint. The corresponding structural element is a dashed line with a diagonal slash, representing a joint in the slab.
  - Second Row:** A cross-section of a floor layer with a dashed line indicating a joint. The corresponding structural element is a dashed line with a diagonal slash, representing a joint in the slab.
  - Third Row:** A cross-section of a floor layer with a dashed line indicating a joint. The corresponding structural element is a dashed line with a diagonal slash, representing a joint in the slab.
  - Fourth Row:** A cross-section of a floor layer with a dashed line indicating a joint. The corresponding structural element is a dashed line with a diagonal slash, representing a joint in the slab.
  - Fifth Row:** A cross-section of a floor layer with a dashed line indicating a joint. The corresponding structural element is a dashed line with a diagonal slash, representing a joint in the slab.
  - Sixth Row:** A cross-section of a floor layer with a dashed line indicating a joint. The corresponding structural element is a dashed line with a diagonal slash, representing a joint in the slab.
  - Seventh Row:** A cross-section of a floor layer with a dashed line indicating a joint. The corresponding structural element is a dashed line with a diagonal slash, representing a joint in the slab.
  - Eighth Row:** A cross-section of a floor layer with a dashed line indicating a joint. The corresponding structural element is a dashed line with a diagonal slash, representing a joint in the slab.
  - Ninth Row:** A cross-section of a floor layer with a dashed line indicating a joint. The corresponding structural element is a dashed line with a diagonal slash, representing a joint in the slab.
  - Tenth Row:** A cross-section of a floor layer with a dashed line indicating a joint. The corresponding structural element is a dashed line with a diagonal slash, representing a joint in the slab.

zodpovědný projektant ing.arch.L.Hromádko		projektant ing.arch.L.Hromádko	vypírací ing.arch.L.Hromádko	<b>ING.ARCH.LUBOMÍR HROMÁDKO</b> architektonická kancelář Na Žitbové 18, Praha 5, 152 00 IČO: 15591544 Kontakt: lubomir.hromadko@seznam.cz, 602 250 877
objednatel Vězeňská služba České republiky Soudní 16/213a, 140 07 Praha 4	Česká republika	místo akce Soudní 988, 140 07 Praha 4	datum červenec 2017	
název akce				
stůpeň				
<b>OPRAVA PODLAH V DÍLNÁCH AREÁLU TSS SOUDNÍ 988, PRAHA 4</b>				
DPS				
mřítko 1:100				
formát				
název výkresu				
A3				
DÍLNA 137, DÍLNA 139, DÍLNA 112				
číslo výkresu D.15.				